



# COVID-19 TRACKER

May 2020

# METHODOLOGY

Each week ORB International polls a **nationally representative** sample of n=2,000 adults aged 18+ throughout England, Scotland, Wales and Northern Ireland. The core tracking questions are :-

Q. When thinking about the Coronavirus here in the UK which of the following do you think is most likely to happen over the next month?

- 1 The worse is yet to come
- 2 The situation will remain largely the same as it is now
- 3 We are over the worst of it – things will begin to improve

How strongly do you agree or disagree with the following statements?

- 1 I think the UK Government is handling the Coronavirus crisis well
- 2 I think that the spread of the virus is now under control

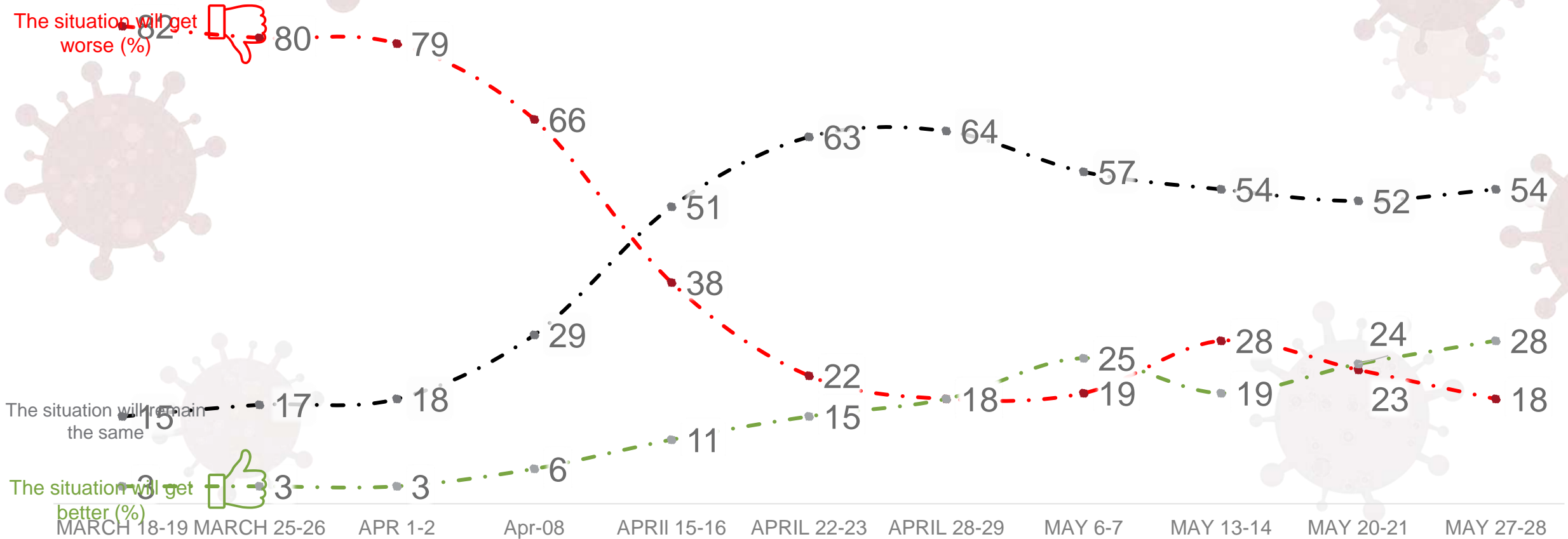
Topical questions each week are inserted and not necessarily tracked week on week.

- **Sample Sizes :**

March 18-20 n=2,094	March 25-26 n=2,085	April 1-2 n=2,077
April 8 <sup>th</sup> n=2,112	April 15-16 n=2103	April 22-23 n=2,095
April 29 <sup>th</sup> -30 <sup>th</sup> n=2,082	May 6 <sup>th</sup> -7 <sup>th</sup> n=2,091	May 13-14. n=2,095
May 20-21 n=2,113	May 27 <sup>th</sup> -28 <sup>th</sup> n = 2085	
- The statistical margin of error at the 95% confidence level is  $\pm 2.2\%$

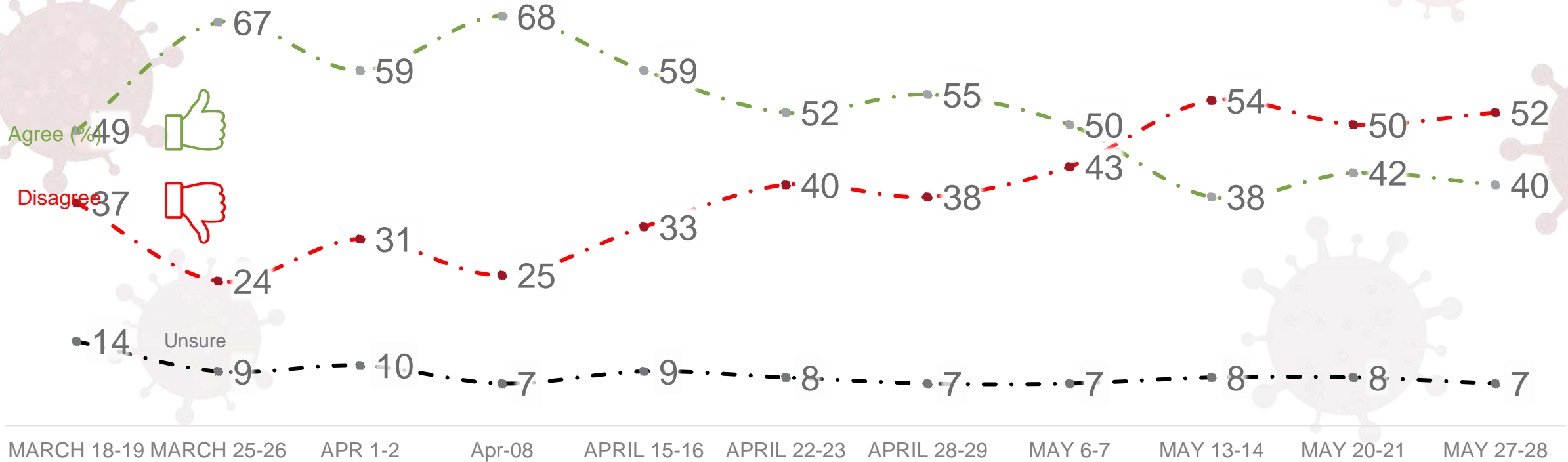


# CORONAVIRUS : HOW THE PUBLIC SEE THE NEXT MONTH



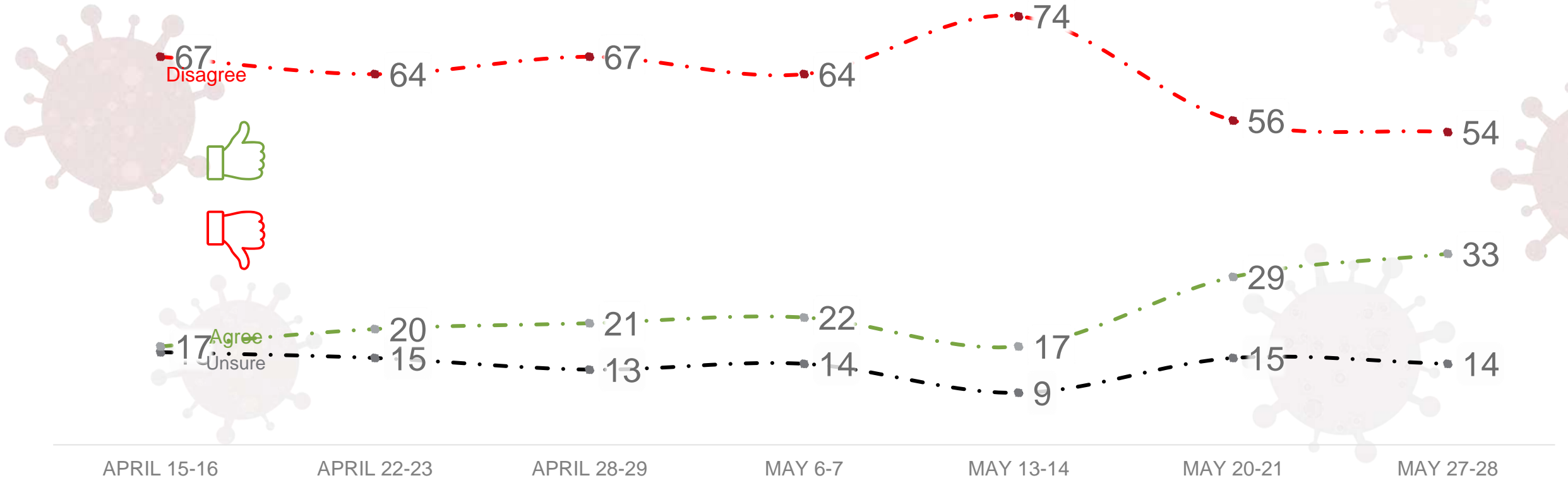
Q When thinking about the Coronavirus here in the UK which of the following do you think is most likely to happen over the next month? The worse is yet to come, the situation will remain largely the same as it is now or we are over the worst of it – things will begin to improve?

# CORONAVIRUS : IS THE GOVERNMENT HANDLING IT WELL?



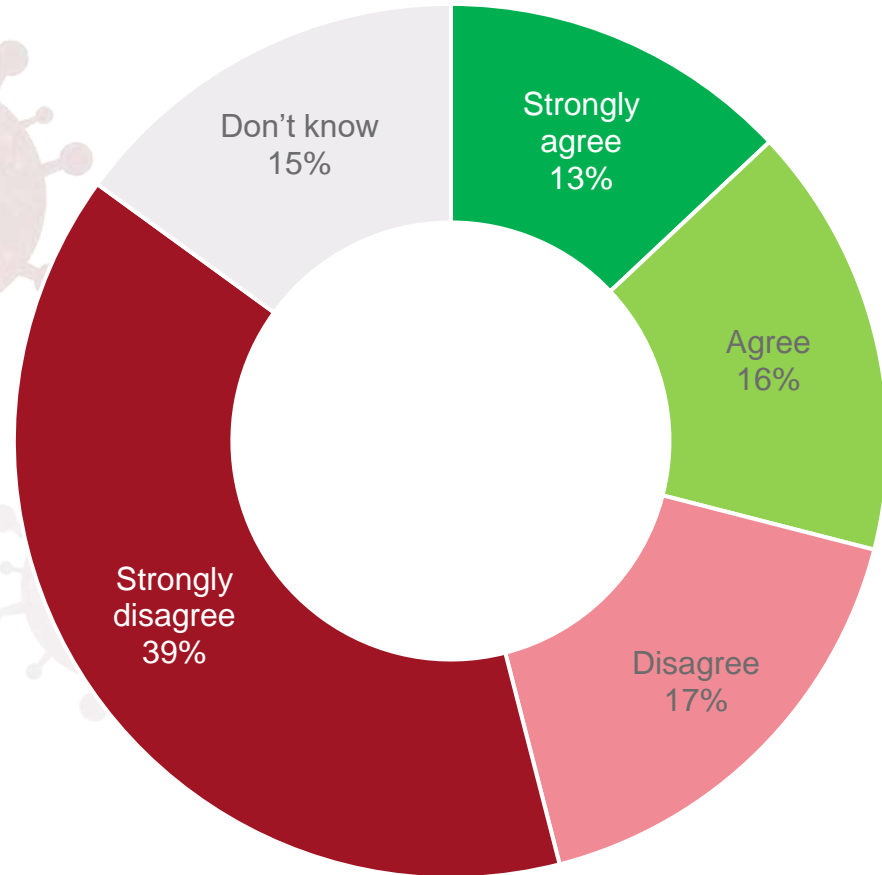
Q How strongly do you agree or disagree with the following statement? I think the UK Government is handling the Coronavirus well.

# CORONAVIRUS : UNDER CONTROL?



Q How strongly do you agree or disagree with the following statement? I think the spread of the virus in the UK is under control

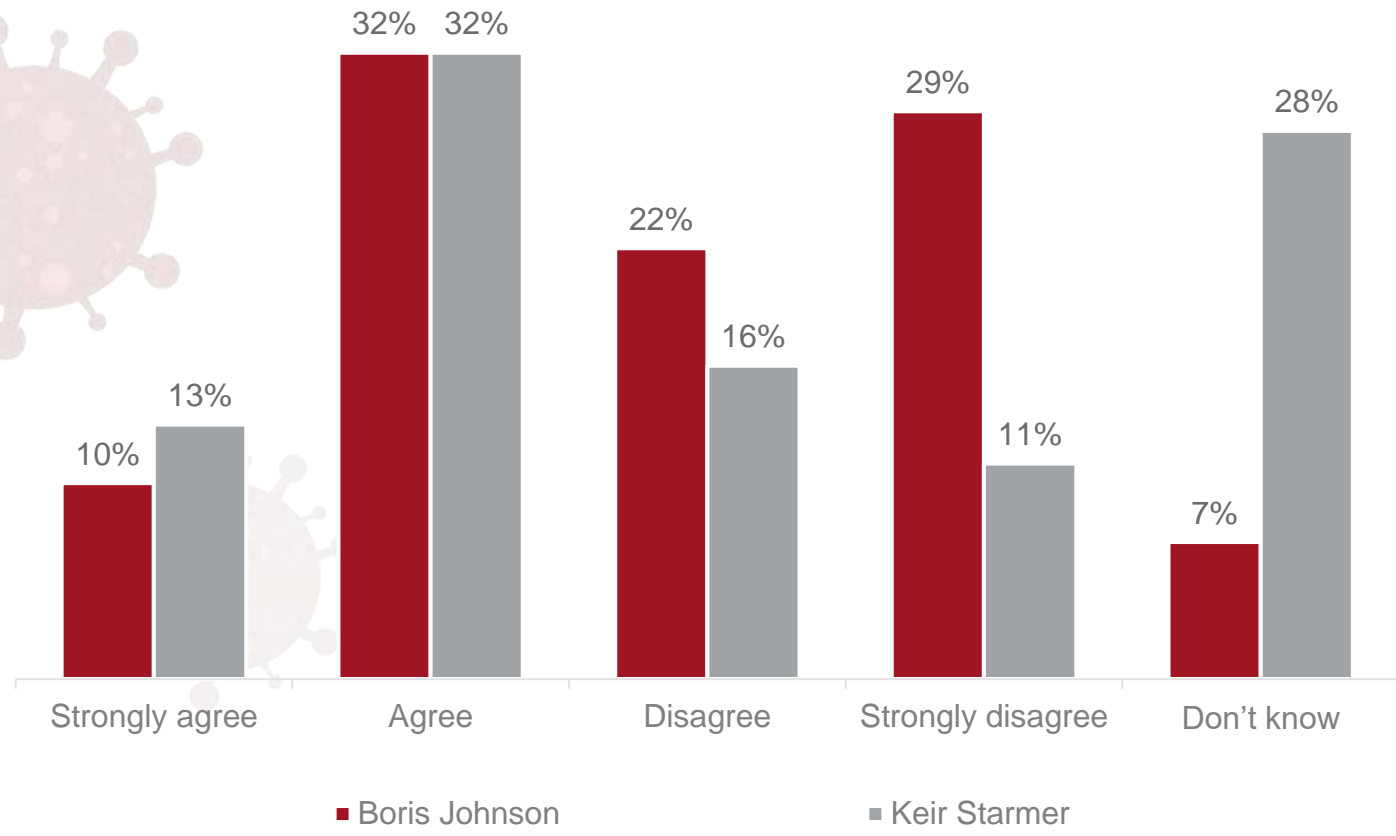
# CORONAVIRUS : TRAVEL FOR CHILD WELFARE



- When faced with the prospect of their children's welfare being at risk, just under a third (29%) would take similar action to Dominic Cummings and travel 260 miles despite lockdown restrictions.
- For those parents with children under the age of 5, that figure is just over two fifths (41%).



# CORONAVIRUS : LEADERSHIP



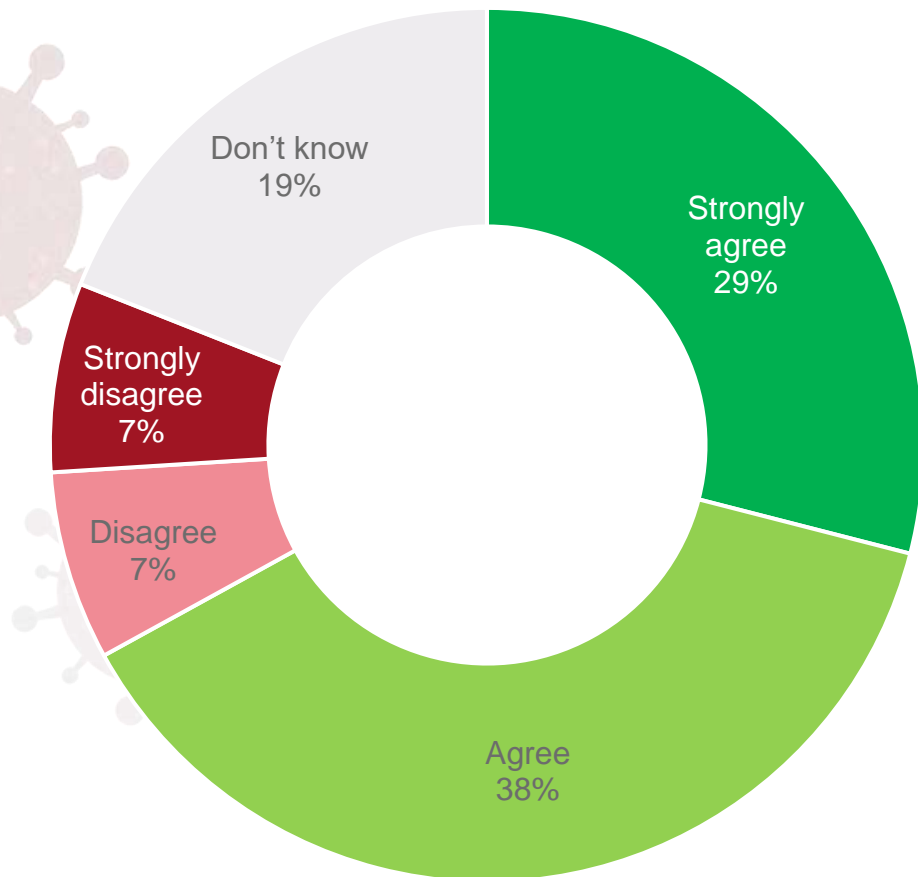
- Majority (51%) don't believe the Prime Minister is showing leadership during this crisis. The corresponding figure for his Labour counterpart is nearly half of that (27%).
- When looking at approval for Johnson and Starmer's leadership, the gap is considerably narrower. 3% more think Starmer is showing greater leadership than Johnson (45% vs 42%).

Q How strongly do you agree or disagree with the following statement? BASE : n=2085 May 27-28  
"I think the Prime Minister is showing leadership during this crisis" and "I think the Labour leader Keir Starmer is showing leadership during this crisis"



# CORONAVIRUS : VACCINE CONFIDENCE:

WILLINGNESS TO TAKE

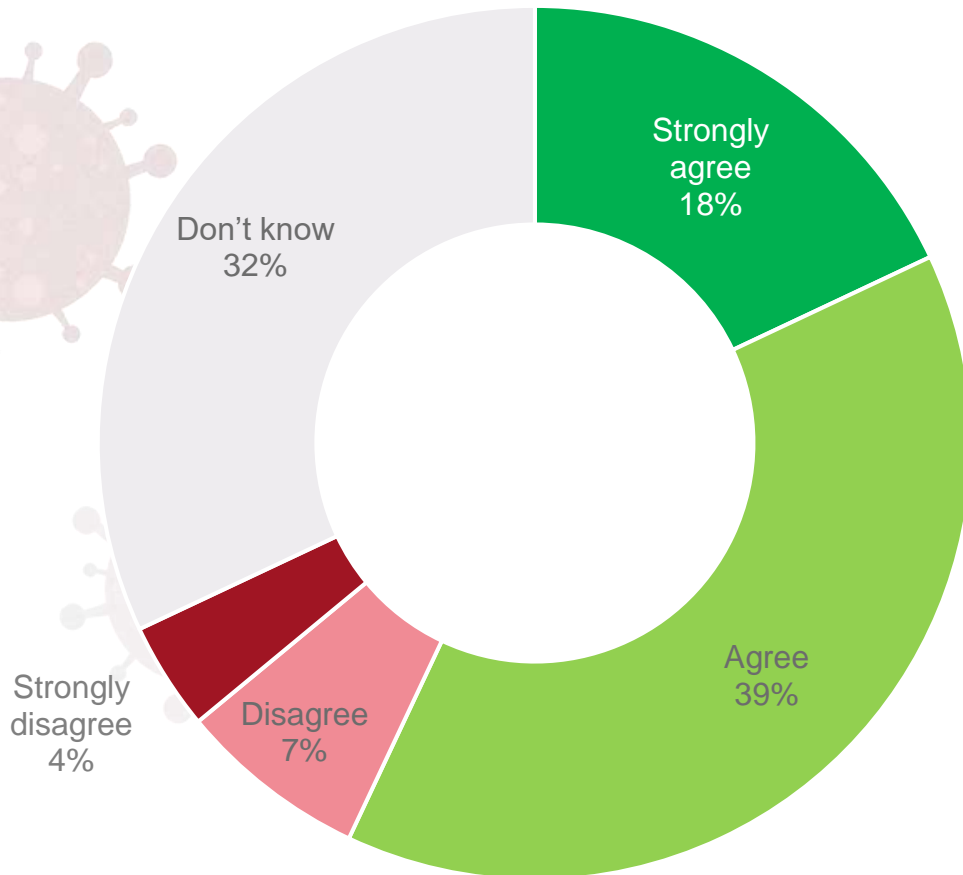
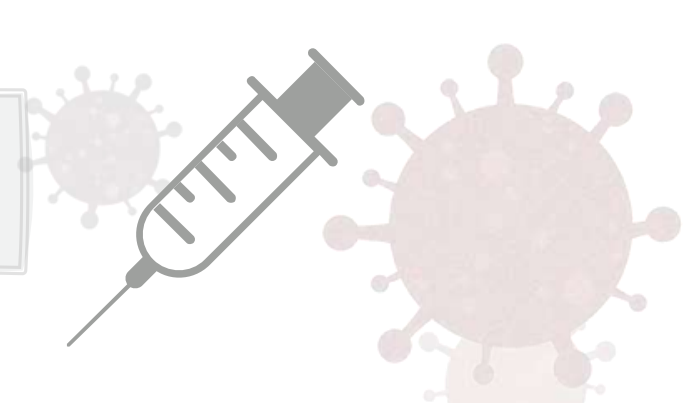


- While an overwhelming majority (67%) would be comfortable taking a vaccine approved in record time, there are still 14% that would be unwilling to do so.



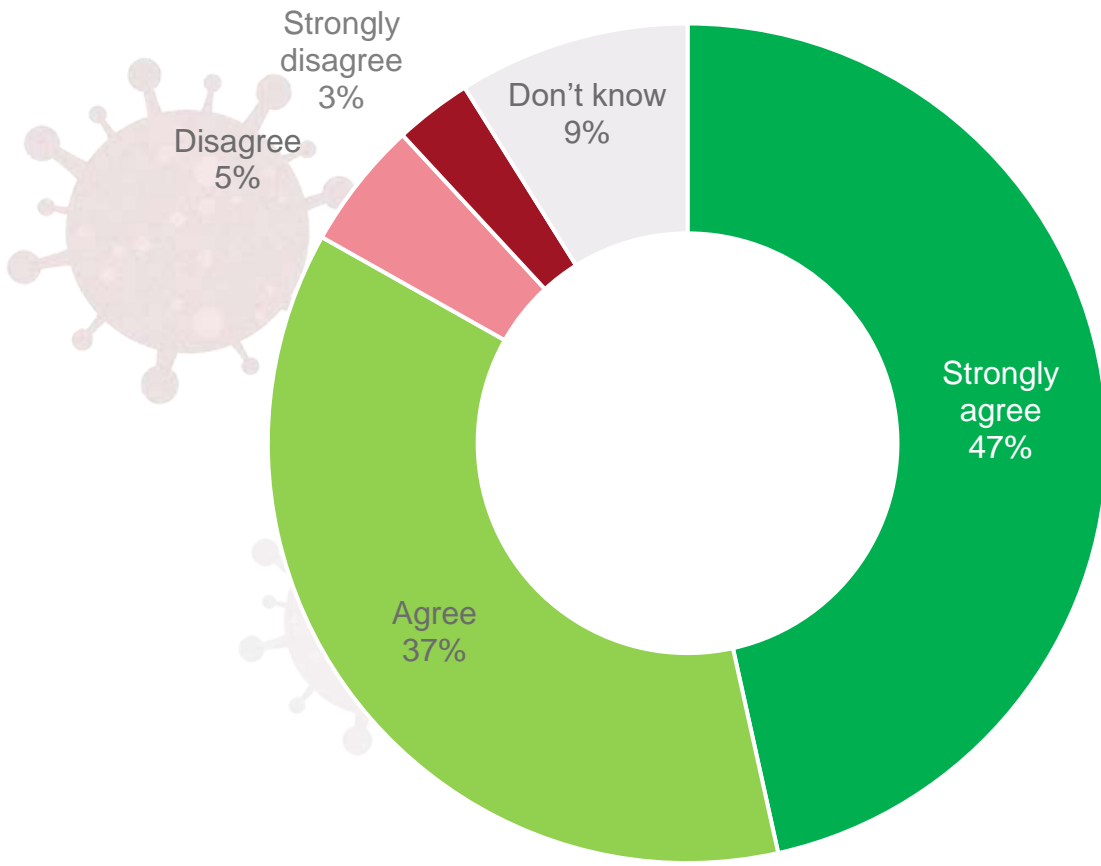


# CORONAVIRUS : VACCINE CONFIDENCE: SAFETY



- Nearly a third (32%) are unsure about the safety of a new COVID-19 vaccine, with just over one in ten (11%) believing a new vaccine to be **unsafe**. However, the majority (57%) would be confident in a vaccine's safety.
- Some striking differences emerge among those in different social gradings for confidence in the vaccine: while two thirds (65%) of those in the AB social grade believe the vaccine would be safe, the corresponding figure for those in the DE grade is just under half (47%).

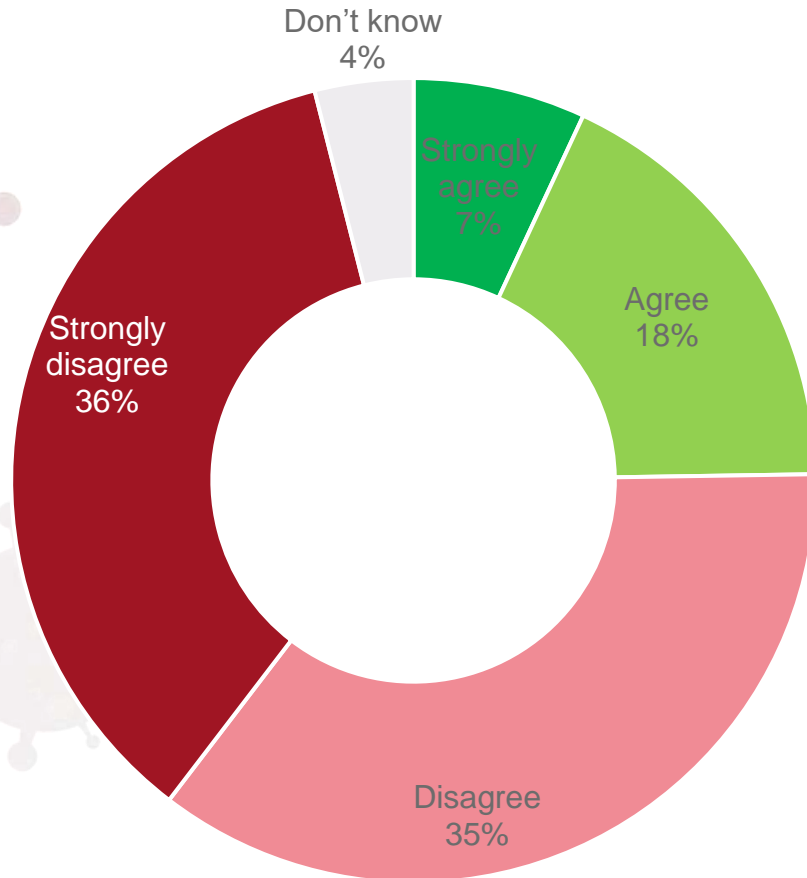
# CORONAVIRUS : VACCINE CONFIDENCE: IMPORTANCE



- A small proportion (8%) remain unconvinced about the importance of a COVID-19 vaccine. The vast majority (84%) consider the creation of a vaccine to be important.



# CORONAVIRUS : UNDERSTAND THE R RATE



- Public understanding of the R Rate is high – with just a quarter (25%) saying they're unclear on its meaning.



**ORB International** has been working in partnership with the **LSHTM** as part of The Vaccine Confidence Project exploring global perceptions towards vaccines to inform policy.



For more information please see [www.orb-international.com](http://www.orb-international.com) or contact

[jheald@orb-international.com](mailto:jheald@orb-international.com)

[ocarden@orb-international.com](mailto:ocarden@orb-international.com)